

High Quality Rapid Tests
with Cutting Edge Technology

ONE-STEP DRUG TEST

ORAL FLUID DRUG SCREEN DEVICE

Oral Cube

5-11 Panel Available with Alcohol Strips

- Test Up to 11 Different Drugs with Alcohol Simultaneously
- Eliminates Cross-Gender Collection Issues
- Easy & Convenient to Use
- One-Step Collection & Testing
- Non-Invasive
- No Instrumentation



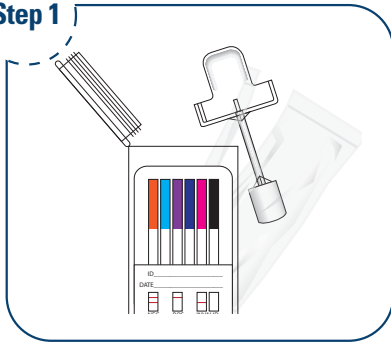
FOR FORENSIC USE ONLY

ALCO ALCO ALCO	Alcohol Test	THC THC THC	Marijuana (THC) Test
AMP AMP AMP	Amphetamine Test	METHADONE METHADONE	Methadone Test
BARB BARB BARB	Barbiturates Test	METH.AMP METH.AMP	Methamphetamine Test
BUP BUP BUP	Buprenorphine Test	OXY OXY OXY	Oxycodone Test
BENZO BENZO	Benzodiazepine Test	OPI OPI OPI	Opiate Test
COC COC COC	Cocaine (Benzoyllecgonine) Test	PCP PCP PCP	Phencyclidine Test

* "For Forensic Use Only" does not apply to any workplace testing or other non-law enforcement testing, regardless of whether or not that testing is conducted under federal agency (e.g. Department of Transportation) authority.

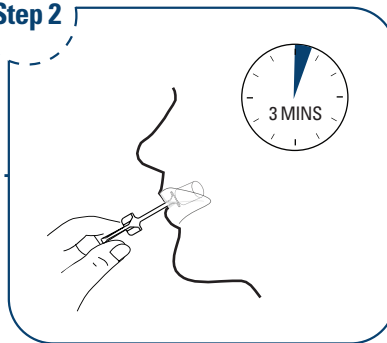
Instructions for Oral Cube

Step 1



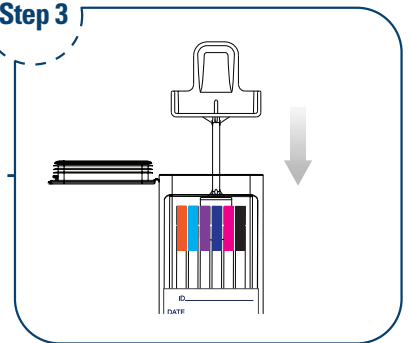
DO NOT PLACE ANYTHING IN MOUTH 10 MINUTES PRIOR TO TESTING. Remove the collection stick and test cube from the sealed pouch. Tear off the collection stick package.

Step 2



Insert the sponge end of the collection stick into mouth and soak sponge with saliva for 3 minutes. (Note: Time should be longer for people of little saliva. If the amount of saliva pressed into the test cube is not adequate for testing, collect more with another new collection stick and express the saliva into the cube again.)

Step 3

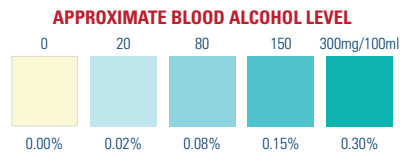


Hold the test cube vertically and place the collection stick with the saturated sponge into the test cube. Make sure to fit the groove of the collection stick on the guide rail of the test cube and press the collection stick to its full extent.

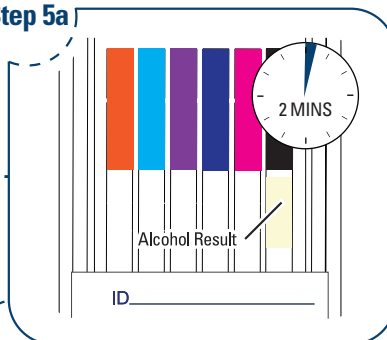
Step 4



Press the lid down to close the test cube. Keep the test cube vertically until you begin to read the test results.



Step 5a



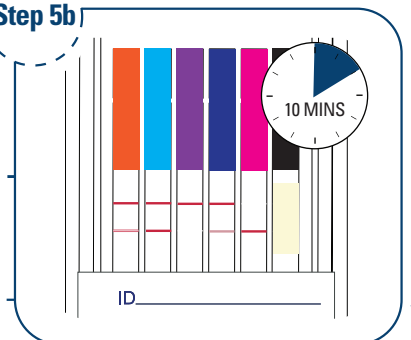
INTERPRETING ALCOHOL TEST RESULT

- Read result at 2 minutes. **DO NOT READ ALCOHOL TEST RESULT AFTER 5 MINUTES.**
- Compare reactive pad color to color chart provided
- Interpretation of results:

NEGATIVE: No color changes on reactive pad.

POSITIVE: Reactive pad changes the color. Estimate the approximate blood alcohol level by comparing the color of the reactive pad to the color chart.

Step 5b



INTERPRETING DRUG TEST RESULTS

- Read results at 10 minutes. **DO NOT READ DRUG TEST RESULTS AFTER 1 HOUR.**
- Any line, no matter how faint, is considered a line.

RESULTS

